



Decor Dreams[®] LMT Walls

AUTOADHESIVE
WALL COVERING

Installation guide



Installation

Decor Dreams is the definitive solution for the most demanding decoration projects. The wall tile/planks of Decor Dreams are suitable to be installed in bathrooms, kitchens, garages, attics, rooms and in any area of the house, office or commerce. Its exclusive fixation system allows its installation in any surface such as: wood, plaster, pladur, stone, ceramics, stoneware, etc. Check in our website www.mydecordreams.com to watch the installation video.

Not recommended use

Before start the installation, please check that all the boxes are from the same colour and from the same batch number due to it may have some difference in tonality. Any claim will not be admitted once the installation is done regarding difference in tonality if boxes of different batch number of the same colour were used. If you detect different batches, check with the distributor before starting the installation.

It is not recommended its installation in the following situations and will not be covered by the guarantee:

- ▶ Walls with continuously humidity and not treated or applied the Decor Dreams Primer.
- ▶ Areas with plaster walls or weak paint that have detachment or weak attachment.
- ▶ Areas permanently exposed to the sun lights or heating sources such as turbines, heater systems, incandescent lamps, focuses, machine motors, etc...
- ▶ Areas permanently exposed to water vapour such as saunas, machine rooms, etc.
- ▶ Outdoor areas or exposed to atmospheric agents as rain, snow, cold or extreme heat.

- ▶ Areas with heavy temperature changes.
- ▶ Plastic surfaces composed by PVC, methacrylate, polyurethane or plastic derivations (is mandatory to apply the sealing base).

Preparation of the surface

Decor Dreams can be installed in the following surfaces:

- ▶ Wood (agglomerates, plywood, okumen boards, solid boards). Is mandatory to remove the rests of paint or varnish that can be detach once the product is installed and apply Decor Dreams primer.
- ▶ Pladur walls, applying Decor Dreams Primer.
- ▶ Walls with humidity must be treated for its removing previously to the installation due to the tiles may detach and out of guarantee.
- ▶ Metal surfaces (aluminium, iron, and steel). Its mandatory remove the rests of painting and apply the adequate primer for irony materials to fix the surface.
- ▶ Plaster surfaces. Is mandatory apply one or two layers of Decor Dreams Primer before the installation.
- ▶ Cement bases and derived. Is mandatory apply two or three layers of Decor Dreams primer on the surface until the pore is closed.
- ▶ Other surfaces: check with the distributor.
- ▶ On mineral tiles (ceramic, plywood, porcelain, marble, etc) is mandatory apply the Decor Dreams Primer for a better attachment.
- ▶ Let dry the primer one hour before the installation of the tiles/planks. If you applied multiple layers of primer, let dry one hour between layer and layer.

Installation

The surface must be clean, free of greases, dust or substances that can detach once the tiles are installed.

Remove the rests of old coverings as painted paper, painting of weak attach, varnishes,... Fix, if needed, the holes produced by the cleaning of the wall to avoid any unevenness that may change the planimetry of the covering.

The Decor Dreams tiles/planks are flexible, but the continuous exposition to extreme flexions may produce the detachment once installed.

We recommend to keep in horizontal position at least a 10% of the tiles (planks to cover possible future deterioration.

Important: With the aim of acclimatize properly, the Decor Dreams tiles must be out of the box in the room where are going to be installed at least 6 hours before the installation.

Assembly instructions

Decor Dreams is an easy installation covering compared with other coverings. Following correctly the installation instructions, you will get amazing results just in few minutes. If you want to apply the product on rough walls, very porous or you have any doubt regarding the wall, we recommend to install three tiles first and let them dry 24h to check the viability of the installation. During the installation process it can be lost a 10% of the material due to the cut declines. It is necessary to calculate correctly the necessary boxes for its installation. In our web you will find the section ¿How many boxes do I need? Where we will help you to buy just the required quantity of boxes for your walls in www.mydecordreams.com/en/how-many-boxes-do-i-need/.

Keep in mind that you will need a leveller, measuring meter, pencil, knife, silicone gun, brush or roller and recipient for the primer (tools not included).

Installation options

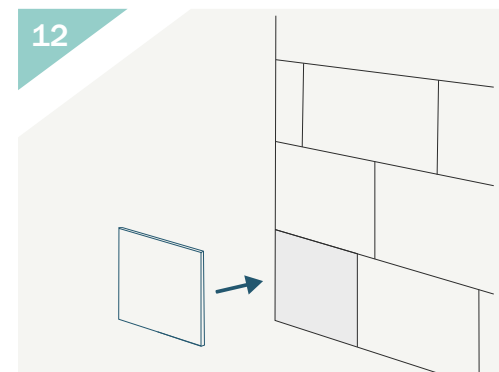
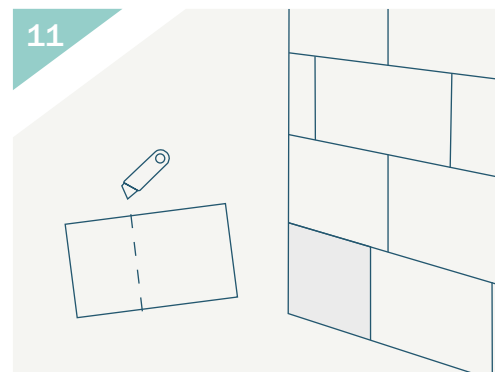
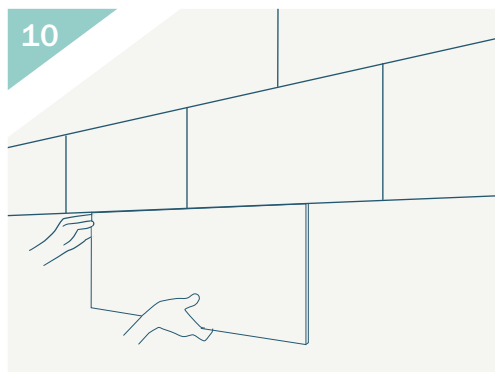
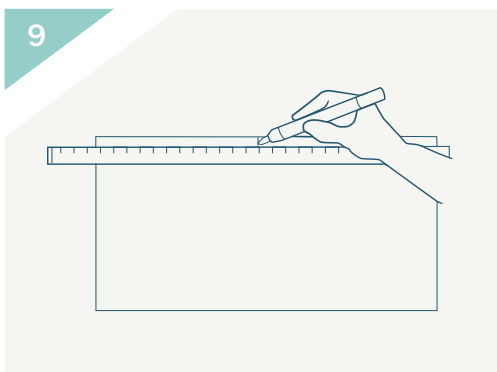
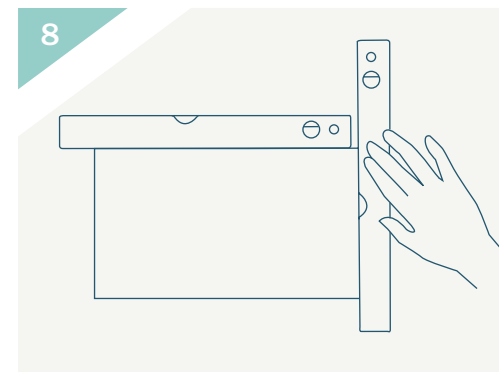
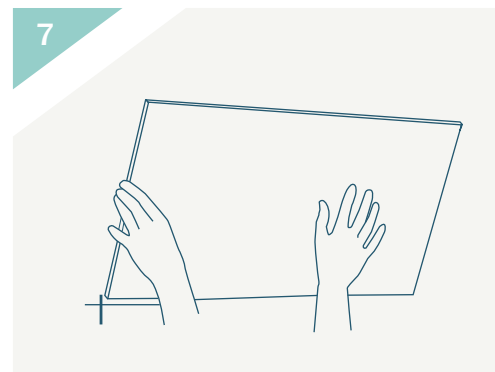
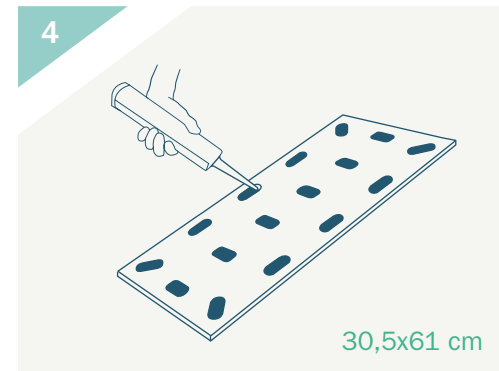
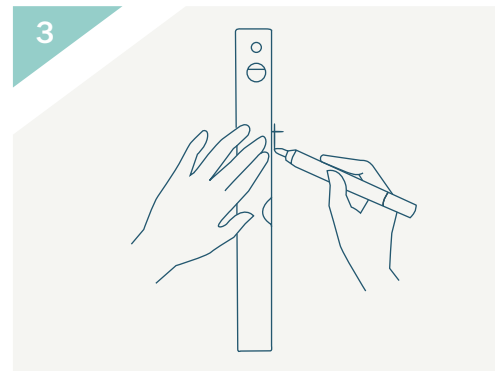
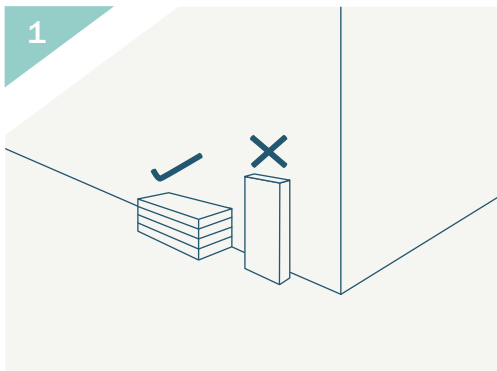
There are different installation options, starting at the bottom (as in the video) or from the centre of the wall or from the top.

The temperature in the room where the tiles are going to be installed must be between 10° and 28°.

If the installation is going to be in rooms with different temperatures, the product can shrinkage or expand, leading to open joints or deformed tiles.



Installation



Instalation in shower places

When you want to install our product in shower places, you need to follow the below instructions:

In this case we need to start from the bottom of the wall, assuring that the tile is well placed and levelled in the area. After the first one, apply a small line of transparent and anti-humidity silicone around the perimeter of the first tile. Before the installation of the second, remove the leftovers of the silicone with the finger wet in water and soap or with a cloth with water and soap.

It is necessary to follow this process in each tile (just where the water can reach the tiles) to avoid the penetration of the water between tiles.

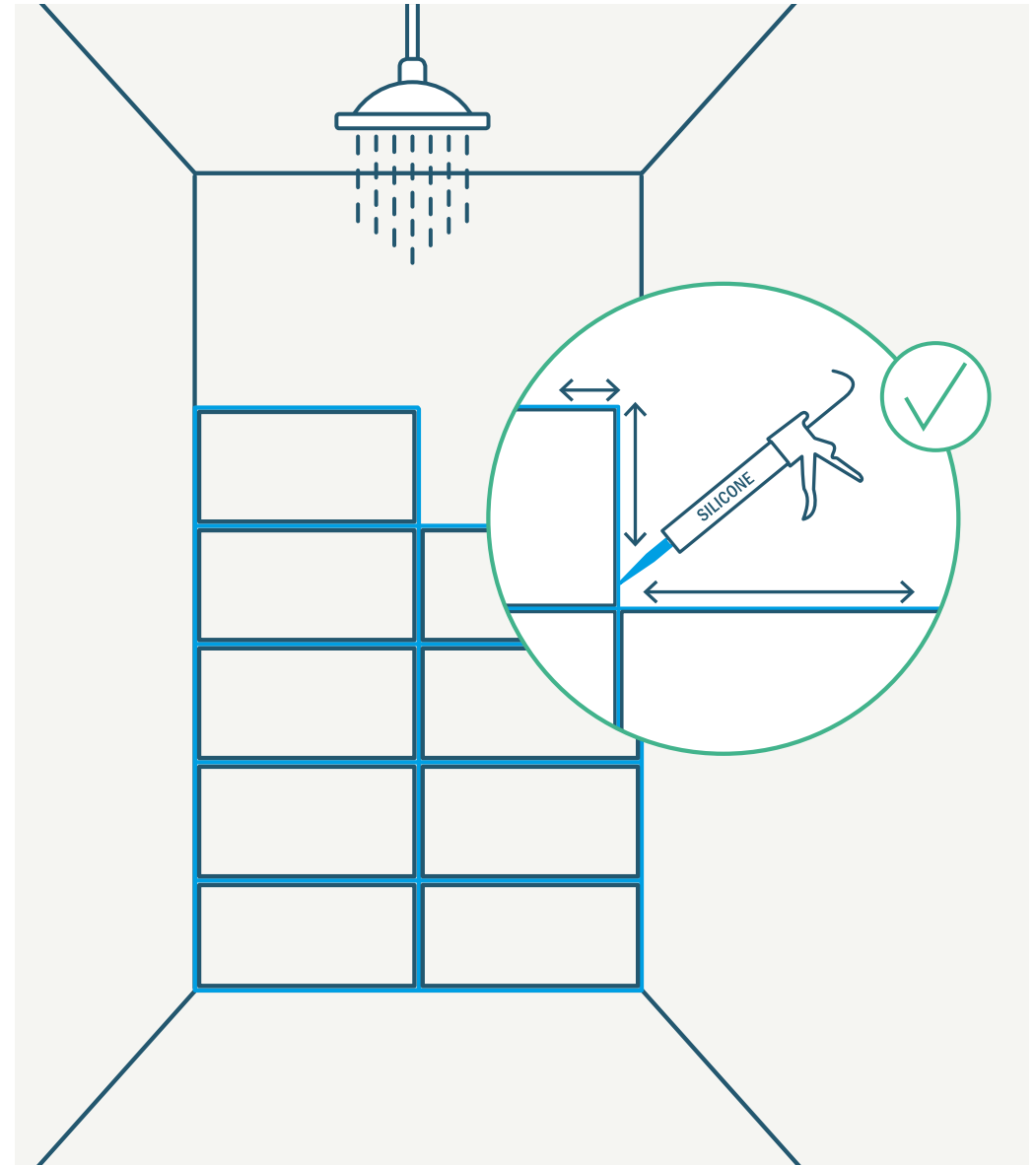
If you use Decor Dreams aluminium trims in any position, assure to seal them with the same product the different places when can reach the water.

In the resting parts of the bathroom, out of the shower places it is not mandatory to apply the silicone within the tiles.

You can watch the process in the installation for shower places video:
www.mydecordreams.com/videos/

IMPORTANT:

The tiles must be installed applying the Decor Dreams glue in all the holes on the back of the tile independently of the wall where you are going to place them. The unfollowing of this norm is going to invalidate the guarantee.

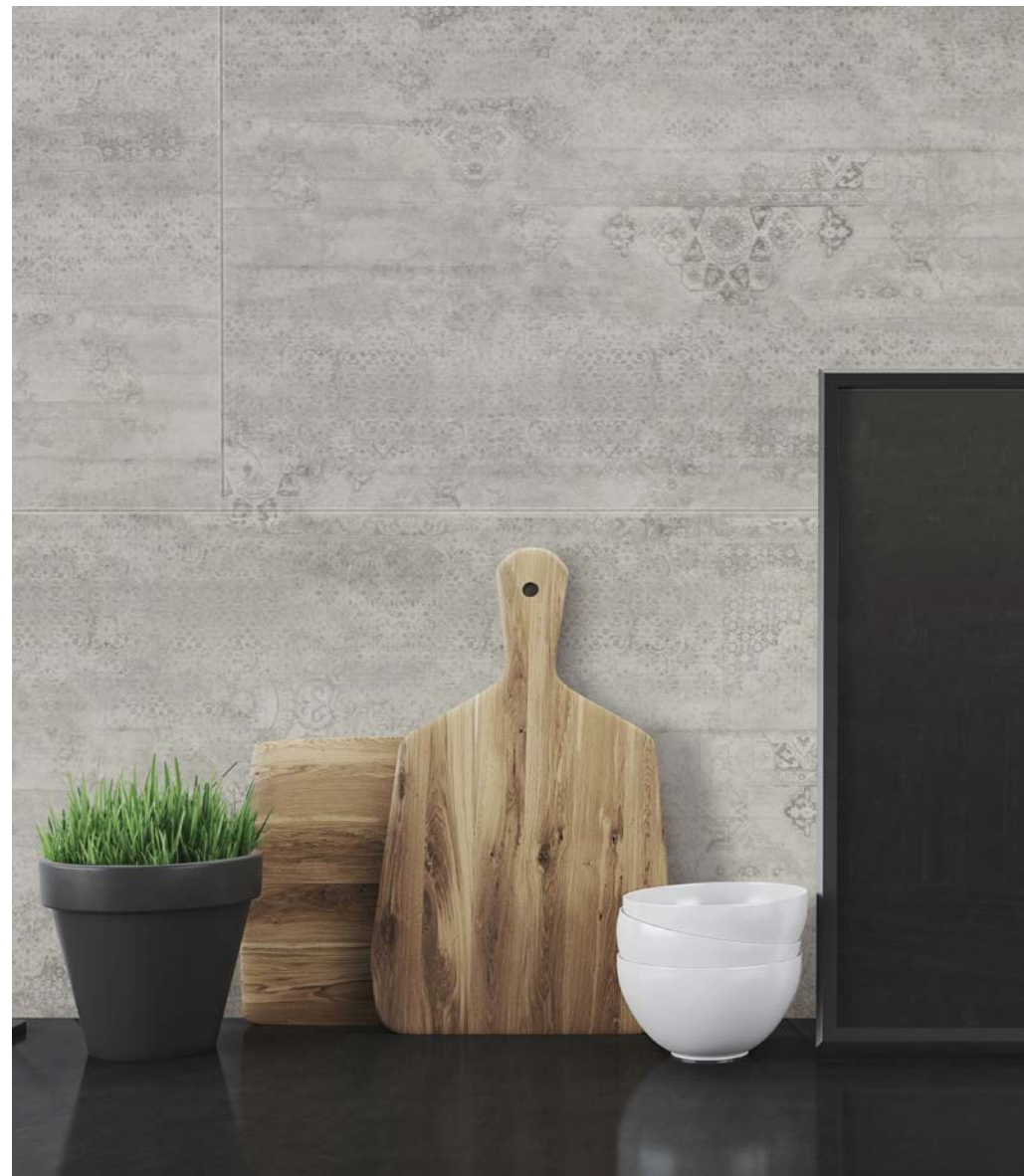


Maintenance recommendations

To protect the Decor Dreams wall covering, we recommend the following:

- ▶ Always check with the distributor if you are going to place the product in places that does not appear as recommended.
- ▶ Avoid to place the product where extreme temperatures and the continuously action of sun lights can reach it.
- ▶ Do not place the product outdoors where sun and rain can reach it directly.
- ▶ It is not necessary to polish, varnish, brightening or wax due to the product conserves it essential and intrinsic benefits without any additional treatment
- ▶ Do not use abrasive products or products with components such as ammoniac, dissolvent or other aggressive agents. The use of other cleanings may alter the properties of the product such as the brightness and the colour. In case of using another cleaner, make a preventive test in some place non eye reachable.

Decor Dreams keeps the right of not accept the proposed guarantee card if it is considered the unfollow of the exposed rules in the present document, as well as rectify, cancel or add any annex of the present guarantee without notice.



Accessories

In Decor Dreams we thought about everything and we offer the necessary primer to prepare the surface where the product is going to be installed. Improve the adherence and the resistant of the covering once installed, guarantying the total guarantee.

This primer is valid and mandatory for all material, wood, plaster, cement, concrete, pladur, bricks, stones or any material non-irony (irons, steel or aluminium). For irony materials must be applied a special primer for this materials.

For all the walls and specially the very porous ones and very irregular, weak, surface cracks, unevenness of the tiles, use our special adhesive Decor Dreams to get the proper attach to the surface and get **5 extra years of guarantee.**

We present you the elements that are going to help you to get the perfect finish on walls. All the range counts with coordinated aluminium trims, making easier the task of finding the complement matching the colour of the walls. The trims are 100% damp resistant, being suitable to install in any area.

Inside our collection you will find multi-functional trim and end-trim. You can match and mix them with any of our wall coverings to add an extra to the wall, separate different materials or colours, protect the corners or to finish the wall.

If you want to see all our options regarding trims, visit our web www.mydecordreams.com/complements/

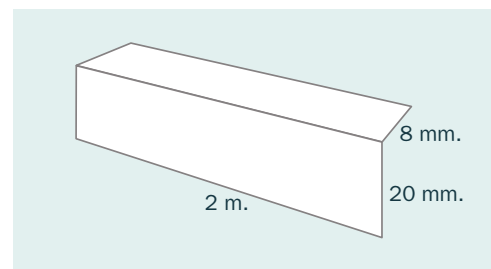


Decor Dreams Adhesive

Package 290ml.
3-4 sqm aprox.
Mandatory for the use of guarantee.

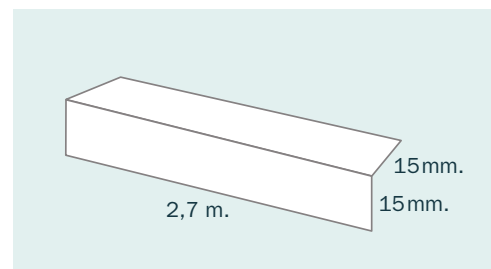
PRIMER

Primer 850 ml.
10 sqm aprox.
Mandatory for the use of guarantee.



End-Trim

Measures of 8 x 20 mm x 2 m.
100% water resistant.
Optional accessory.



Multi-function Profile

Measures of 15 x 15 mm x 2,7 m.
100% water resistant.
Optional accessory.

FAQ - Frequent Answers

Can be installed directly on ceramic tiles?

Yes, one of the advantages of Decor Dreams is the adaptation to any surface. Its double fixation system, auto adhesive tile plus additional adhesive Decor Dreams allow the instantaneous fixation to almost all the surface. In case of fixation on ceramic tiles, it is mandatory to clean the tiles to remove any residue of grease or painting. It is mandatory apply the Decor Dreams primer in all the walls. If the ceramic tiles have an unevenness bigger than 1mm may create the inadequate installation and it would be necessary to level the wall. You can use our Decor Dreams adhesive to level the unevenness.

How can I clean it?

The vinyl mineral tiles of Decor Dreams are easily clean. It is recommended the use of neutral soap or soapy solution which does not contains abrasive products such as ammoniac, bleach,...

Can I install it myself or need to be installed by a professional?

The Decor Dreams wall covering are very easy to install, just some basic tools are required. We recommend read the instructions of installation to solve the main doubts or watch the installation video.

Is it fire resistant?

The mineral wall panels by Decor Dreams have a fire behaviour classification of CS2 d0. This result certifies that in case of fire, the tiles will have the behaviour inside the current regulation. The tiles are flame-retardant, they not spray toxic smoke nor the expansion of the fire and they do not produce detachments of the material. It may be affected by the fire, getting darker or create bubbles in the visible part, deforming the aesthetic base. The product have the test and classification CS2d0 that allows us to be installed in domestic and commercial places such as restaurants, hotels, shops or industries.

¿Can be installed in the shower?

Yes, Decor Dreams is 100% water resistant and it is suitable to damp areas as showers.

It is highly recommended that make the installation all sealed in order to avoid any future filtrations behind the back of the wall. We recommend to apply anti-damp transparent silicone around the perimeter of the tiles or planks during the installation process of each one. You can check how to do it in the installation video.

FAQ - Frequent Answers

Can I install on plaster, cement, wood or textured walls and gotele?

To install the wall covering Decor Dreams tiles on plaster or textured wall, it is mandatory to follow the next steps:

Before the installation be have to make sure that the walls are free of damp, greases or unevenness that may affect the perfect adherence of the tiles. You also can use our Decor Dreams adhesive to compensate the unevenness.

It is mandatory apply the Decor Dreamd primer in walls with gotele, plaster, cement, woods, laminated, marble, ceramic or any porous material to have the guarantee.

In case of wanting to install this product on big pore gotele, sand down the gotele to leave the pores to a regular level not higher than 2mm.

Can I change the tile/plank in case of break or imperfection?

Yes, the tiles/planks can be easily changed. The estimated time of changing is about 10 minutes.

To change the tile, break with a cut the central part of the tile and detach to the edges with a sharp spatula. It is normal that the adhesive and the EVA foam stays stuck in the wall if the tile has not been installed properly. This can be removed scraping with the sharp spatula.

Can the tiles be installed next to heat sources?

When the tiles are going to be installed close to a heat source that can directly affect the tiles (heaters, stove, lamps, and kitchen area with fire...) we suggest to avoid the direct exposition with refractory glass or aluminium tiles. In this case, the heat is not going to change the surface of the product. However the direct flame can change it, turning black the reached area, but without the expansion of the fire. In the kitchen area, always be careful not to put closer tools with high temperatures.

Have the tiles sound and thermic properties?

Absolutely. Once installed you will feel an improvement regarding thermal isolation up to 3-4 degrees. If we compare it with a standard ceramic wall (cold to touch), the Decor Dreams tile offer a warm and cosy touch. Another benefit is the improvement of sound isolation, within 6-8 dB and optimises the acoustic barriers of the wall where is installed.

Archivo actualizado 1/12/2020

Decor Dreams®

LMT Walls

contacto@mydecordreams.com

www.mydecordreams.com



Decor Dreams is a registered
brand by
Euro Trade Flooring S.L.
Galileo, 11, Pol. Ind. Can Estella
08635 Sant Esteve Sesrovires
Barcelona (España)